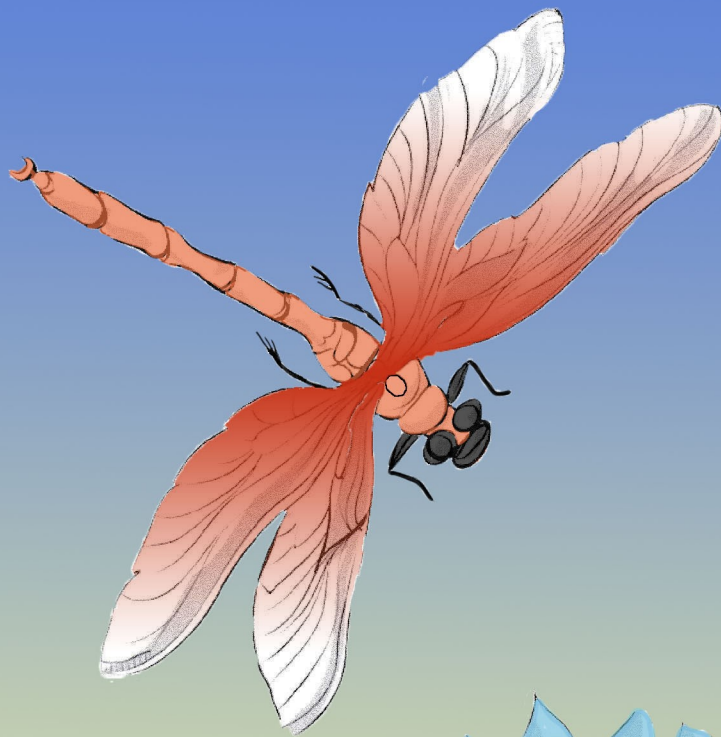




THE MARYLAND CLUBWOMAN

PUBLISHED BY THE GFWC MARYLAND FEDERATION OF WOMEN'S CLUBS, INC. VOL. 91 | NO. 1 | WINTER 2017



WOMEN
CREATING
POSITIVE
CHANGE

Living The Volunteer Spirit

2016 GFWC
Newsletter
Contest Category
III Winner

THE MARYLAND
CLUBWOMAN

Staff

Editor:

Michele Thompson

Thompson_Michele1317@yahoo.
com

TheMarylandClubwoman@Gmail.com

Associate Editor:

Meg McMahan

Mcmahan_margaret@verizon.net

Associate Editor:

Nancy Porter

nancporter@gmail.com

The Maryland Clubwoman is
published by The GFWC
Maryland Federation of Women's
Clubs three times a year (Fall,
Winter, and Spring).

Anyone wishing for a print version
of the magazine may contact their
club president or print this directly.

The Editor reserves the right to
make changes for length and clarity
in any content used in *The
Maryland Clubwoman*.



WWW.GFWC.ORG
1734 N STREET NW,
WASHINGTON, D.C. 20036

WWW.GFWCMD.ORG

2016-2018 MARYLAND OFFICERS

President

Reno Eitel

Junior Director

Rebecca Wagman

President-elect

Dorothy Gregg

Vice-President & Dean of
Chairmen

Karen-Marie Wasik

Recording Secretary

Barbara Weldon

Corresponding Secretary

Mary Snyder

The purpose of the Federation is to unite the women's clubs of Maryland for the betterment of their communities through the support of the Arts; the preservation of our natural resources; the promotion of education; the encouragement of healthy lifestyles; stressing civic involvement; and working towards world peace and understanding.

Treasurer

Anita Becker

Parliamentarian

Babs Condon

Baltimore District
President

President

Dorothy Bishoff

Eastern Shore District
President

President

Cynthia Dykes

Montgomery County

District President

Kitty Cash

Southern District

President

Beverly Death

Western District

President

Jo Harp

IN THIS ISSUE

- | | | |
|--|---|---|
| 4 - From the President's Desk | 15 - Do's and Don't's of Reporting | 25 - Youth Art Program Contest Form |
| 5 - From Your Junior Director | 16 - Narrative Reporting Form | 26 - GFWC Community Involvement Program Contest |
| 6 - 2017 Southeastern Region Meeting | 17 - Reporting Forms | 27 - Bylaw Amendments |
| 7 - 2017 Junior Fall Conference | 18 - Reporting Forms | 28 - Baltimore District Reoirt |
| 8 - Call to Mid-Winter Rally and February Board of Directors Meeting | 19 - 2018 LEADS Application Guidelines | 29 - Eastern Shore District Report |
| 9 - Annual Reporting | 20 - 2018 LEADS Application Form | 30 - Southern District Report |
| 10 - Annual Reporting Deadlines | 21 - Outstanding Maryland Clubwoman Rules | 31 - State President's Special Project |
| 11 - Reporting Guidelines | 22 - Outstanding Maryland Clubwoman Rules | 32 - Leadership and Call to Action |
| 12 - Reporting Guidelines | 23 - Outstanding Maryland Clubwoman Form | 33 - Membership |
| 13 - Reporting Guidelines | 24 - Youth Art Program Contest Rules | 34 - Tree-Mendous Maryland |
| 14 - Do's and Don't's of Reporting | | 35 - In Memoriam |
| | | 36 - Clubwoman Connection |

TAKE NOTE!

The Maryland Clubwoman will now be emailed to any member with an address on file. Email Mary Snyder (mnyder55@comcast.net) an updated address to ensure receipt of each publication.

NEXT ISSUE DEADLINE

All articles and information for the SPRING 2018 issue of *The Maryland Clubwoman* must be in the hands of the State

Editor by **January 15, 2018**

CLUBWOMAN CONNECTION:

Any club project or activity which is scheduled through the end of June 2018 may be submitted for inclusion.

SUBMISSIONS:

TheMarylandClubwoman@Gmail.com

When submitting, please name files as "Content_season and year_article title"

QUESTIONS ABOUT SUBMISSION AND CONTENT?

Baltimore, Eastern Shore, and Southern Districts:

Meg McMahan

Mcmahan_margaret@verizon.net
et

Western and Montgomery County Districts:

Nancy Porter

nancporter@gmail.com

FROM THE PRESIDENT'S DESK



Reno Eitel,
GFWC Maryland President

Dear Federation Friends,

Winter evokes thoughts of snow, cold and hibernation -- but only if you are standing still. Well, I believe GFWC Maryland clubwomen will be toasty warm this winter as you continue to move, create and do amazing work in your communities.

This officer was privileged to attend several District Meetings in the fall where she heard about the wonderful projects your clubs are doing, and it warmed her heart to know she is a part of the greatest volunteer organization in the world. Thank you for all of your hard work and dedication!

At the Board of Directors Meeting scheduled on February 20, 2018, GFWC Maryland clubwomen will participate in putting together calm down kits with items donated by the districts. The items provided in each kit are used by school children who are having difficulty concentrating, help to calm them, and enable them to better focus on their work. Please plan to attend and participate in this hands-on project.

You won't want to miss the GFWC Maryland 2018 Convention, April 21-22, 2018, at The Sheraton Columbia Town Center Hotel in Columbia, MD. The hotel staff are excited about our event and truly want to work with us. Many plans are being made for a fun and informative convention where Maryland clubwomen will Honor the Past, Celebrate the Present and Welcome the Future. Look for the Call to Convention for more information. I hope to see you there.

Isn't there an outstanding Maryland club member you would like to recognize for her efforts during this past year? Please consider nominating a fellow club member as Outstanding Maryland Clubwoman. Information on the nominating process is contained in this issue of the Magazine and on the GFWC-MD website.

Clubs are also encouraged to submit applications for LEADS candidates. Sandy Blankenship, State LEADS Chairman, is anxious to receive those applications -- and we need those leaders. Again, information is available in this issue of the Magazine or can be found on the GFWC-MD website.

Please know that each and every day this officer reflects on how fortunate she is to know you -- a caring and committed group of women who are dedicated to community improvement by enhancing the lives of others through volunteer service and Living the Volunteer Spirit through GFWC.

May you and your families enjoy a wonderful Holiday Season and Happy New Year.

Yours in Federation Friendship,

Reno Manning Eitel

Reno Manning Eitel

FROM YOUR JUNIOR DIRECTOR



Becca Wagman,
GFWC Maryland Junior Director

Dear Federation Sisters,

As we shift into winter, we move into a time of stillness. As nature's movement gradually slows down, it is a time for us to relax our minds and remember the important things in life.

One of the most important lessons one can learn is to be kind. As it says in our collect, "And O Lord God, let us forget not to be kind". It has often been said that kindness is like snow. For it beautifies everything it covers. My hope is that our GFWC sisters this winter can remember to spread kindness and to make GFWC events meet two purposes: to help the community and to acknowledge our member's hard work and efforts.

I would like to give a shout-out to our generous and outgoing Maryland Juniors who have been hard at work this fall.

I was honored by the warm welcome I received by the Junior Woman's Civic Club of Cumberland as our hosts for the 2017 Junior Fall Conference. We had a fun filled day with music, rocking in our rocking chairs, and walking for the children of St. Jude. The officers and chairman did an excellent job sharing the hard work they have been doing for GFWC Maryland Juniors. In the afternoon, we put on our walking shoes and strolled through the lots of the Ali Ghan Country Club to raise money for the fight to end childhood cancer — our members helped to collect \$2,415.00 for St. Jude Children's Research Hospital!

I was so proud of the work we were able to accomplish.

I hope you will join us February 3rd in Pocomoke for our Mid-Winter Rally. This day will warm you up with GFWC sisters working together on a day of service to benefit the local community. Hope to see you there!

Please keep up to date with the monthly happenings of our Junior Members by checking out our Facebook Page, Instagram Account, and our Junior Happenings Newsletter. By promoting our work for the community on social media, my hope is to gain more interest in our amazing organization and to help the community get to know the name of GFWC.

Warm Wishes,

Rebecca Wagman

Rebecca Wagman

Find us on 

LIKE OUR PAGE ON FACEBOOK BY SEARCHING FOR "GFWC MARYLAND JUNIORS"

 LIKE US ON INSTAGRAM BY SEARCHING "GFWC MD JUNIORS"!

2017 SOUTHEASTERN REGION MEETING

The GFWC Southeastern Region meeting held November 2-5, 2017 in Hebron, Kentucky was attended by Maryland clubwomen who joined in Federation Friendship with Clubwomen from Kentucky, North Carolina, Tennessee Virginia, West Virginia and the District of Columbia.

Clubwomen who arrived early enjoyed the tour of “The Ark Encounter” which features a full size Noah’s Ark built according to the dimensions given in the Bible.

Clubwomen in attendance had many opportunities to learn more about GFWC in the Focus on Fitness, Fun and Federation theme. GFWC Committee Chairmen gave reports, there were fun musical fitness activities and lots of Federation opportunities to share your support of different causes. Members enjoyed a delightful visual tour of GFWC Headquarters which will be available to download from the GFWC website. What a great way to share information about our Headquarters with your clubwomen at a future meeting.

GFWC Kentucky State Night Banquet “Jeans Jewels and Juleps” was a fun time for all. Members were entertained with information about the importance of bourbon to the Kentucky region by JD Reeder, who appeared as legendary Bourbon whiskey distiller, the Reverend Elijah Craig. Afterwards, members enjoyed fun time at the St. Jude Carnival.

Nominations were given for the 2018-2020 SER Officers. GFWC Maryland was proud to endorse our own state president, Reno Eitel, for the office of SER Treasurer. Elections were held and the following elected to serve SER for the upcoming administration:

Della Gowan, President	GFWC Tennessee
Peggy Barnes, Vice President	GFWC Kentucky
Beverly Lassiter, Secretary	GFWC North Carolina
Reno Eitel, Treasurer	GFWC Maryland

Speakers were Shelia Shea, GFWC President and Mary Ellen Brock, GFWC President-elect. GFWC President Shea emphasized the many accomplishments of GFWC through history with her presentation “GFWC Strong.” GFWC President-elect gave a glimpse into the future with “First View of the Next Two.”

The state reports were entertaining and informative. All state Federations are so busy Living the Volunteer Spirit sharing their FOCUS on Federation activities. We were most proud of our GFWC MD President Reno Eitel, and GFWC MD Director of Junior Clubs, Rebecca Wagman, as they shared Maryland’s Focus this past year.

Needless to say there were also opportunities to spend money ,and Southeastern Region Clubwomen like to spend!!

The 2018 GFWC SER Conference will be held November 1-3, 2018 at the Double Tree Hotel at Winston Salem University in Winston Salem, NC.

Sincerely,

Dottie Gregg

Dottie Gregg
GFWC MD President-elect



2017 JUNIOR FALL CONFERENCE



The members of GFWC Maryland gathered for a meaningful day of friendship and service.

The theme for the day was “Stepping Towards the Future” and we certainly did a lot of stepping.

Members learned new ideas on how to keep meetings fun and full of energy. We participated in a snowball fight to share new ideas that our members could take back to their clubs as potential new projects or meeting activities.

Attendees also learned more about each other in a game of switch your rocking chairs.

In the afternoon, members walked to end childhood cancer raising \$2,415.00 for St. Jude Children’s Research Hospital.

Wow! What amazing accomplishment. Needless to say, it was a great day for all.



Mid

Winter

Rally



**February 3rd, 2018
10 am - 2pm**

**XO Beanery & Bites
129 Market St, Pocomoke City, MD 21851**

Come for a fun, service-packed day of filling shoeboxes with school supplies for teachers and making Dr. Seuss-inspired posters for Read Across America Week!

Please bring school supplies for teachers in need and books to donate to the local library

FEBRUARY BOARD OF DIRECTORS MEETING

The February Board of Directors Meeting for GFWC of Maryland will be held on February 20, 2018 at Holly Hills Country Club in Ijamsville, MD. Lynn Davis, Director of The Child Advocacy Center of Frederick will be the guest speaker. Ms. Davis combines administrative duties with direct service to support the healing of survivors of childhood trauma.

Holly Hills Country Club
5502 Mussetter Road, Ijamsville, MD 21754



Lynn Davis, Director of The Children's Advocacy Center, cuddles up with Hodge, the facility's resident support animal.



THE GFWC MARYLAND FEDERATION OF
WOMEN'S CLUBS, INC.

ANNUAL REPORTING

Club reports and statistical forms must be postmarked
by January 31, 2018.

State chairmen, please submit your convention award choices
and report on the top ten projects submitted by clubs for
your program. Also, submit a club project of your choosing
to GFWC International as a nominee for the GFWC Club
Creativity Award. Deadlines for this award submission is
March 3, 2018.

2016 MEMBERSHIP STATISTICS



GFWC MARYLAND FEDERATION OF WOMEN'S CLUBS, INC.

MEMBERSHIP STATISTICS AS REPORTED FOR 2017 AWARDS

Clubs designated with an asterisk are Past District Presidents Clubs and do not usually report



Category 1 Members 15 and under:

GFWC Centennial Club of Western District*	11
GFWC Jr. Woman's Civic Club of Cumberland, Inc.	8
GFWC The Woman's Club of Greater Fallston	10
GFWC Jr. Woman's Club of Pocomoke City	15
Emeritus Club*	10
Southern Lights*	8
STARS Juniors	1
GFWC Western Maryland Community Club	9

TOTAL CLUBS – 9

CATEGORY 2 Members 16 – 30

The Town and Country Club of Greensboro	20
GFWC Joppatowne Woman's Club, Inc.	31
GFWC Laytonsville Woman's Club	24
GFWC Metropolitan Community Club of Montgomery County	29
The Woman's Club of Perry Hall, Inc.	26
GFWC The Wednesday Club of Sandy Spring	20
GFWC Silver Spring Woman's Club, Inc.	20
GFWC Wicomico Woman's Club, Inc.	15

TOTAL CLUBS – 8

GFWC CATEGORY 3 Members 31-60

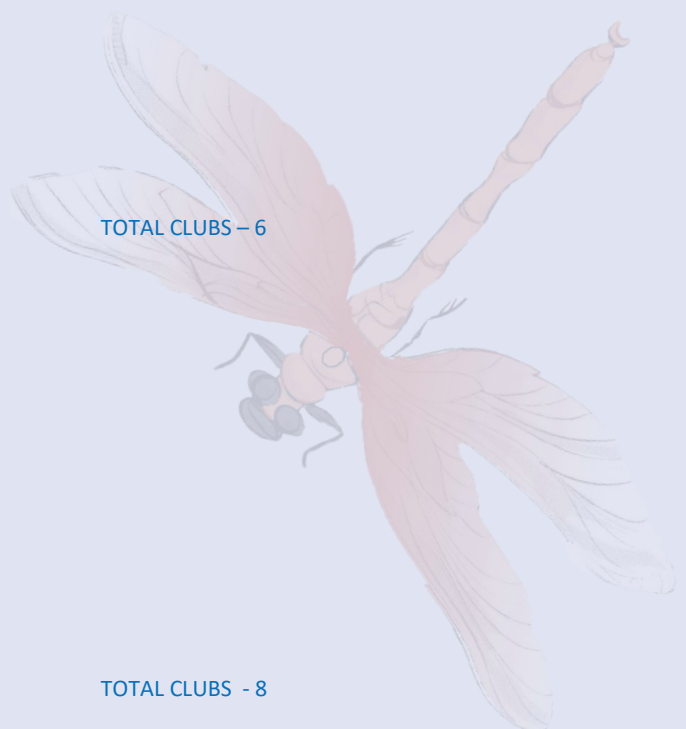
Woman's Club of Bethesda, Inc.	49
The Woman's Club of Cecil County, Inc.	41
GFWC Woman's Club of Dundalk, Inc.	38
GFWC Woman's Club of Laurel, Inc.	39
University Park Woman's Club, Inc.	35
GFWC Jr. Woman's Club of Westminster, Inc.	38

TOTAL CLUBS – 6

CATEGORY 4 Members 61 and Over

GWFC Woman's Club of Chevy Chase, MD, Inc	248
GFWC Civic Club of Oakland, Maryland, Inc.	73
Frederick Woman's Civic Club, Inc.	79
Severn Town Club, Inc	65
The Woman's Club of Glyndon, Inc.	73
GFWC Woman's Club of Westminster,	84
GFWC Jr. Woman's Club of Chevy Chase, MD, Inc	61
GFWC Woman's Club of Linthicum Height, Inc.	134

TOTAL CLUBS - 8



2016-2018 GFWC MD Club Reporting Guidelines

SPECIFIC GUIDELINES FOR CLUBS PROGRAMS/PROJECTS NARRATIVES

Definition of What is a Project --- What is a Program?

Project: is a collection or a hands on service project initiated by or participated in by members.

Program: is a 30 minutes or more of a speaker, presentation, education, attendance or donation.

Annual reporting period is January 1 through December 31

GFWC Statistical Report Form:

This form must be used to report the total statistics for all club programs and projects, and is the cover sheet for your program/project narratives.

Report ONLY those hours spent by each member in approved club programs and projects.

- ❖ Participation in regular club meetings and the travel time to/from these meetings should not be included.
- ❖ Travel time, preparation and participation in programs/projects can be included.

Fill in the total number of programs and projects for your community service program (CSP), special projects (SP) and/or advancement areas (AA).

Fill in the total number of members who participated (***the total number of members participating may NOT exceed the total number of members in the club***).

Fill in the total number of hours by adding the hours spent.

Fill in the total amount of money donated and include if any In Kind donations were listed.

Check the box to enclose a narrative.

Club Program/Project Narratives:

A good club program/project narrative should include:

- A brief description of the programs or projects, with statistical information about that program/project underneath the narrative.
- If you have more than one (1) program/project in that area, the grand total of the statistical information of all club programs/projects in that area should be at the top of the narrative reporting form.
- Narrative should not exceed two (2) pages, 12 font, typewritten, and single-spaced.
- All pages of narratives must have the proper identifying heading, please refer to the **Club Narrative Report Form** in the club president's packet.
- Each program narrative must have its' own page
- **Be concise, state the facts**, write your "story" and tell everyone what your club did.
- Write a good **lead sentence**, one that would make the reader want to continue to read your "story".
- Let the reader know: *who you are * what you did * when and where it was held * how you did it and how long it took * why did you do it * and how many or how the community benefited from it.
- Remember the person reading the report may not know the club, the members, the area you live in. They may not know that this is a new project or a project done every year. The narrative allows clubs to fully describe projects including the statistical information.
- Remember to state if this is a NEW project that your club has undertaken or if you have made changes to an ongoing project.
- Be sure to include the **number of people who participated, club members and non-members recipients**. It is important to include the number of people who were the recipients of the services provided. (Ex: 15 of your members held a bingo at a nursing home. There were 50 residents who came to play bingo and each were given a little goody bag.) This will tell the reader who and how many benefited from the project.

- Activities listed in GFWC programs/projects should be reported in the appropriate program/project areas. **Use the GFWC Club Manual as a guide.**
- Be specific in reporting projects involving **GFWC partners**. Separate these from the other community service programs/projects. Note the specific partner in your narrative and heading.
- **Activities not listed in GFWC program materials** should be reported in the program/project area which most closely relates to the activity. Include any other groups that the club partnered with, including local government, other service groups (Kiwanis, Elks, etc.), and other nonprofit organization. Remember you can give overall results of project, BUT you must be sure to include only statistics regarding member participation and contribution to the project.
- **Report hours** that were spent ONLY on club-adopted programs/projects, include activities held outside a club meeting. Describe how the time was used, be sure to include planning, implementation, results and evaluation. Include any promotion or PR that was achieved.
- **NO CROSS REPORTING:** Exception: Fundraising-If fundraising is a result of a project reported under a CSP, Special Project, or Advancement Area other than fundraising. Example: the club sponsored a golf tournament with funds being raised for a specific charity (Shelter) and this project (golf tournament) was reported under GFWC Signature Program, Domestic Violence Awareness & Prevention. You would record all hours required for the tournament under DVA &P. You would also list the amount of dollars you donated to the shelter.
Since “Dollars Raised” is NOT an option under Domestic Violence on the Statistical Form, you can list the dollars raised under Fundraising. However, only the dollars raised is used, the hours can only be recorded one time and that’s in the Domestic Violence Awareness program.
- **Report all money that was raised or donated and all in-kind donations for club programs/projects.** Estimate the value of in-kind gifts. See the GFWC In-Kind donation guide, included in the club president’s packet.
- If the club **donates money from the treasury to a project**, use the total number of members in the club under “volunteer hours”.
- **Volunteer hours spent attending state, district, regional, or GFWC meetings/conventions** may be reported under Leadership. Expenses incurred may also be reported. If your club is host of one of these events, you should report your preparation time and all expenses.
- When a club completes a program/project, the chairman should immediately document the facts to retain the accurate information. It would be a good idea to have members give statistical information on a routine basis. This can be accomplished by having a member record form.
- Share the work of writing club narratives. **Plan a one-day session for reporting.** Have a soup and salad luncheon, or maybe meet for lunch at a restaurant. Gather a committee of five or six members who can compile the information provided by the chairmen. **Make it fun!!** A wine party is not advisable. Don’t drink while writing!
- Compiling and writing club narratives can be a wonderful leadership development tool; it’s a big job when left to only one or two members. Be proud to be a member of GFWC Maryland and your club. It’s the little things that do make a difference in the lives of others.
- Have members read over the narratives to insure the proper use of **grammar, spelling and punctuation**. Edit, edit, edit!
- Do a check list: Is anything missing from the report?
- Be enthusiastic! Be proud of your club! Have fun!
- Be sure to share the narratives at a club meeting. New members will enjoy reading about projects and may decide to “join” that committee. All members will be AMAZED at all the projects the club had been involved with during the course of the year. Create a Club Trivia game using the reports!
- Adhere to ALL deadlines!

*Club Narratives are optional but greatly increase chances of recognition.
Narratives are required for a club to be considered for a State award and/or
to be considered for nomination of GFWC Club Creativity awards.*

Now – get to work and have fun!!

REPORT WRITING

REPORTING YOUR CLUB ACTIVITIES

Reporting tells the story about your club project and ultimately the history of your club and stated. You can not assume the reader knows the club or project. You must give precise information and details.

All clubs should make every effort to report, because reporting is the means by which clubs and the State are able to receive recognition for the tremendous services clubwomen provide to their communities.



THREE BASIC STEPS for writing CLUB REPORTS

1. **Complete the GFWC-MD Statistical Form-** All club presidents are responsible for submitting the GFWC-MD Statistical Form for their club in January of each year, a 2-sided form summarizing volunteer hours and donations for club projects/ programs from the previous year.

2. **Attach any Project Report Narrative -** Clubs are encouraged to submit Club Narratives. You only have to give a brief paragraph describing ONE or more projects/programs including the statistic for each project/program. We want to hear about your club favorites, new projects tried, or a project that shows your club's creative side.

NOTE: Clubs may submit up to 3 pages per program area

(i.e. Education, Home Life, Public Issues).

Attach the special MARYLAND report forms for:

Tree-Mendous Maryland ♦ Save the Bay ♦ State President's Special Project: S H I P

3. **Send copies of your club's GFWC-MD Statistical Form and Project/Program Narratives by January 31, 2017 to:**

- > Reno Eitel, State President (1 copy)
- > Karen Wasik, Dean of Chairmen (2 copies)
- > Your District Dean of Chairmen (1 copy)
- > Keep (1) copy for your club files

Junior & Juniette Clubs: you need to mail to all of the above, plus send (2 copies) to

- > Rebecca Wagman, Director of Junior Clubs

All of the mailing information is included on the GFWC-MD Statistical Form

It's easy as, 1 2 3

Let me show you what Reporting is all about!

DOs & DON'Ts OF REPORTING

DO

- >**DO** compile and use ALL of your club activities for the total statistics you report on the **GFWC-MD Statistical Form** from January 1st to December 31st.
- >**DO** Be sure to include ALL of your fundraising efforts.
- >**DO** report separate club projects on separate Project/Program Narrative. Karen will forward your project narratives to individual state chairman.
- >**DO** Include up to 3 typed pages, single-spaced, of Narrative for each project/program your club has done work in. (*Remember, Narratives are optional, but enhance chances of recognition*)
- >**DO** Include a Proper Heading on EVERY page of Narrative like the following EXAMPLE:
(*Remember – Your narratives will be separated from your GFWC-MD Statistical Report Form*)

Club Name: GFWC Whooters Club
Program Name: Education Community Service Program / Partnership

Program Chair or Club President Name: Jane Member Phone Number: 301-123-4567
Address: 123 Main Street, Anytown, MD 12345-0123

Statistical Data: Reporting Club Year: 2017
Total Projects/Programs: ____ **Members:** ____ **Total Dollars:** ____ **In-Kind Donations:** ____ **Hours:** ____

- >**DO** Number each project/program and include statistical information for each.
- >**DO** Describe your project briefly, including the following:
WHAT the project was ♦ WHY your club undertook the project ♦ HOW the project was accomplished ♦ WHERE and WHEN the project occurred ♦ WHO benefited from the project.
- >**DO** Keep a copy of your reports for your club records.
- >**DO** Remember – this can be FUN!!

PLUS – Attach the special MARYLAND report forms for:

Tree-Mendous Maryland ♦ Save the Bay ♦ State President's Special Project: S H I P

Remember - If your club does not provide a narrative, the State Chairman cannot give recognition to your club on State or GFWC level.

The state chairman NEEDS your club's narratives to write her report to GFWC.

DO NOT

- >**Do Not** write one long report with all activities; information is difficult to distribute to state chairmen.
- >**Do Not** send in separate club committee reports as your narratives
- >**Do Not** send reports directly to GFWC in Washington, D.C.
All information goes to your state.
- >**Do Not** report the activities of individual members, unless your club voted to undertake the project either in participation or funding.
- >**Do Not** report a project in more than one program area. **NO CROSS REPORTING!**
(Example: A human trafficking donation may be included in International Outreach report or Domestic Violence, but not both.)
Use best judgment as to your club's purpose for doing the project.

DO

REMEMBER TO HAVE FUN!!!

- ▶ **Create a fun atmosphere with a theme party for snacks.**
- ▶ **Give a prize to the chairman who turns in their report the quickest.**
- ▶ **Create a trivia game for the next club meeting to give members some idea of the hours they volunteered and amount of donations which were given.**
- ▶ **Make a copy of all club statistical information and narratives available at the next club meeting for members to read.**
- ▶ **Everyone will be surprised at the totals!**



GFWC Maryland CLUB NARRATIVE Reporting Form
January 1 - December 31, 2017

Club Name: _____ # of Members in Club: _____
District: _____
Person Preparing Report: _____ Phone: _____
Mailing Address: _____
Email: _____

Name of GFWC Special Program, Community Service Program, Advancement Area: _____

Total # of Programs: _____ Total # of Projects: _____ Total Volunteer Hours: _____
Dollars Donated: _____ In Kind Donations: _____ Dollars Spent: _____ Dollars Raised: _____

Describe your club's individual programs/projects in the specific GFWC Special Programs (SP), Community Service Program (CSP), and Advancement Areas (AA) with a narrative below.

Please number the individual programs/projects listed below along with the statistical information for that program/project. You may have up to 2 pages, single spaced, 12-font, 1/2-inch margins.

The **total figures** for all programs/projects, even if narrative does not include all programs/projects in this area of SP, CSP or AA, should be recorded above and on the Statistical Form.

There is a SAMPLE Club narrative enclosed in your packet.

It is VERY important that your club information shows on EACH narrative that your club submits. Be sure each program is on a separate page (ie: Education, Arts, etc.)

Thank you

GFWC Maryland Statistical Report Form

Club Name	Number of Members	District
(Please check one) <input type="checkbox"/> General Club <input type="checkbox"/> Junior Club <input type="checkbox"/> Juniorsette Club		Reporting Year: <input type="checkbox"/> 2016 <input type="checkbox"/> 2017
Club President's name	Phone #	Email
Address / City / Zip Code		

Project is a collection or a hands on service project initiated by or participated in by members.
 Program is a 30 minutes or more of a speaker, presentation, education, attendance or donation.

GFWC & GFWC-MD SPECIFIC PROJECT REPORTS	Number of Projects	Number of Programs	Volunteer Hours	Dollars Donated	In-Kind Donations	Narrative
GFWC SIGNATURE PROGRAM: DOMESTIC VIOLENCE AWARENESS AND PREVENTION						
Community Service Projects						
Partnerships:						
Prevent Child Abuse America						
GFWC JUNIOR SPECIAL PROGRAM: ADVOCATES FOR CHILDREN						
Community Service Projects						
Partnerships:						
March of Dimes						
St. Jude Children's Research Hospital						
ARTS						
Community Service Projects						
CONSERVATION						
Community Service Projects						
EDUCATION						
Community Service Projects						
Partnerships:						
Hugh O'Brian Youth Leadership (HOBY)						
HOME LIFE						
Community Service Projects						
Partnerships:						
Canine Companions for Independence						
Easter Seals						
The Heart Truth						
Inside Knowledge						
INTERNATIONAL OUTREACH						
Community Service Projects						
Partnerships:						
Heifer International						
Operation Smile International						
United Nations Foundation, Shot @ Life						
U.S. Fund for UNICEF						
PUBLIC ISSUES						
Community Service Projects						
Partnerships:						
Kettering Foundation						
Sew Much Comfort						
USO						

GFWC ADVANCEMENT AREAS	Number of Projects	Number of Programs	Volunteer Hours	Dollars Spent	Narrative
COMMUNICATIONS AND PUBLIC RELATIONS					
LEADERSHIP					
LEGISLATION AND PUBLIC POLICY					
MEMBERSHIP					
WOMEN'S HISTORY AND RESOURCE CENTER					

FUNDRAISING & DEVELOPMENT	Number of Projects	Number of Programs	Volunteer Hours	Dollars Spent	Narrative
Club Fundraisers					
GFWC Endorsed Fundraising Partners:					
Flower Power					
Terri Lynn Nuts					

Volunteer Hours	Books Read

Epsilon Sigma Omicron (ESO)

MARYLAND SPECIAL PROGRAMS	Number of Projects	Number of Programs	Volunteer Hours	Dollars Donated	In-Kind Donations	Narrative
MD President's Special Project - S H I P						
Tree-Mendous Maryland						
Save the Bay						

POSTMARKED BY: JANUARY 31st

INSTRUCTIONS:

Complete this form to include total statistics of all club projects/programs for each Special Program and Community Service Program, Partnership Project, Advancement Area, ESO, and Maryland Special Programs. Narratives are optional, but they will enhance chances of recognition and are required to be considered for a State award and are required to be considered for nomination of GFWC club awards.

If you submit a narrative description of your project or program, please mark an "x" in the "narrative" box for the program area and attach the narrative to this Statistical Form.

Narratives may not exceed three (3) pages and must be typewritten and single-spaced.

All General, Junior and Juniorette Clubs:

Mail the Statistical Form and narratives to:

- (1) copy to: Reno Eitel, MD State President
510 Anchor Drive, Joppa, MD 21085-4502
- (2) copies to: Karen Marie Wasik, Dean of Chairmen
6 Harrowgate Court, Potomac, MD 20854-6115
- (1) copy to: Your District Dean of Chairmen (see names/addresses below)
- (1) copy for your club files.

Junior and Juniorette clubs will also need to mail

- (2) copies to: Rebecca Wagman, MD Director of Junior Clubs
95 Bond Street, Westminster, MD 21157

Districts Dean of Chairmen:

Western:

Kaye Shoemaker
4542 Araby Church Rd,
Frederick, MD 21704

Eastern Shore:

Jackie McCarty
11453 Riverton Road
Mardela Springs, MD 21837

Baltimore:

Sherry Maxwell
611 Flintlock Drive
BelAir, MD 21012

Southern:

Sandra Blankenship
626 Cleveland Rd
Linthicum, MD 21090

Montgomery County:

Merle Oberle
8013 Exodus Drive
Laytonsville, MD 20882-1111



GFWC LEADS APPLICATION

GFWC MARYLAND FEDERATION OF WOMEN'S CLUBS, INC. LEADERSHIP EDUCATION AND DEVELOPMENT SEMINAR (LEADS)

This issue includes the GFWC Maryland Informational Sheet and Application for the GFWC Leadership, Education and Development Seminar (LEADS).

GFWC initiated the Leadership Education and Development Seminar, LEADS, for the purpose of finding, training and encouraging clubwomen from the grassroots level to step up, pursue, and accept leadership opportunities at all levels of Federation. Participation in LEADS can help these members gain the capabilities, confidence and commitment necessary to pursue and achieve a higher office and serve with distinction. It is held on the day before the official opening of the GFWC Annual International Convention.

A strong LEADS candidate demonstrates leadership capabilities at the club level as a club project committee member, chairman, club officer, incoming, or active president. Further, a strong LEADS candidate exhibits a strong commitment to the Federation and an understanding of the GFWC mission community service, illustrated by program and projects in which she is or has been involved. A strong LEADS candidate also demonstrates leadership skills, organization, responsibility, trustworthiness, enthusiasm, flexibility, and a desire to pursue higher leadership positions in GFWC of Maryland. A LEADS candidate **MUST** agree to share information gained from LEADS participation, understand the financial costs involved with the program, and have never held an elected position beyond the state level and never before attended a LEADS program.

GFWC contributes to the attendee a stipend of \$250 and one half (1/2) of the room charge for two (2) nights at the official convention hotel. Additionally, the Maryland Federation contributes \$300 towards the attendee's expenses. Please consider applying yourself or encouraging someone from your club in whom you see leadership potential to apply. As a past LEADS graduate, I can personally assure the attendee will find the program a rewarding experience.

The deadline for applications is February 1, 2018, and though only one is selected we hope to receive many applications from which to choose. The application is also available on the state website. My contact information is on the form. Please do not hesitate to contact me if you have any questions.

Sandra Blankenship

Sandra Blankenship,

MD LEADS Chairman

GFWC-MD LEADS APPLICATION FORM

DEADLINE FOR SUBMISSION: February 1, 2018

Note: If more space is needed for answers, attach additional sheets.

Return this form, along with two letters of support from active GFWC club members to:

**Sandy Blankenship, MD LEADS Chairman
626 Cleveland Road
Linthicum, MD 21090-2835
Sandra60Blankenship@gmail.com**

Name: _____

Address: _____

Phone: _____ Email: _____

Club: _____ District: _____

Above information should be concealed during judging process.

Please answer the following questions in as much detail as possible:

List all local club offices and/or chairmanships held:

List all district offices and/or chairmanships held:

List GFWC club/district programs/projects in which involved:

List positions at the district, state, and/or national level in which you are interested:

Please state why you would like to take part in the LEADS Seminar as a state representative:

Are you willing to:

✦ Attend the GFWC LEADS program on the day at the GFWC convention? Yes _____ No _____

✦ Defray costs to attend GFWC LEADS not covered by GFWC or state? Yes _____ No _____

Share what you have learned at LEADS with your state's members? Yes _____ No _____

OUTSTANDING MARYLAND CLUBWOMAN

Outstanding GFWC Maryland Clubwoman Award



This award's purpose is to honor one member each year who exemplifies an outstanding GFWC Maryland clubwoman.

This award was originally sponsored by Edith Klein, Honorary State President 1978-1980 and the first award was presented to Barbara Pillote, May 1979.

Please think about your members and honor one of them by sending a letter of endorsement to our state president telling why your club values your member's dedication, time and talents. Every club has more than one person who might fit the criteria of this award. Please take the time to honor one of your members this year and send your entry by

March 1, 2018.

Please have your club choose a nominee now, and follow the guidelines to complete the coversheet and narrative entry form.

All entries must be postmarked to
Reno Eitel, GFWC Maryland President
by March 1, 2018

OUTSTANDING MARYLAND CLUBWOMAN



Outstanding GFWC Maryland Clubwoman Award

RULES

1. Nominees must be members in good standing of a general club of the GFWC Maryland Federation of Women's Clubs, Inc.
2. Ineligible members are: the current members of the GFWC Maryland Executive Committee, honorary GFWC Maryland State Presidents, former recipients of the award, and junior club members as the GFWC Maryland Juniors present their own Outstanding Junior Clubwoman Award each year.
3. Only one nominee per club may be submitted. We recommend polling of all members to help choose your honoree.
4. The COVER SHEET must be fully filled out and signed to be eligible.
5. A separate page of narrative must be included containing **500 words or less, (typed, double spaced)** explaining why the club believes the member is deserving of this award. Judging will be based on the nominee's work in GFWC Maryland with the main emphasis placed on club sponsored activities accomplished in the year preceding the nomination. Additional background including club involvement over the years, along with any district and state activities may be included that indicate a strong, continuing interest in the Federation. In order for nominees to be anonymous during judging, the name of the nominee and the name of her club, and dates of service must be omitted from the main body of the narrative.
6. The State President will number each entry and send copies of the numbered and anonymous narrative pages to the chairman of the OMC committee who will distribute copies of the numbered pages to her committee and ask for their top choice. The chairman will advise the State President of the number of award recipient and be given the names so she can make arrangements to honor each of the club nominees during the annual state convention and present of the award to this year's Outstanding GFWC Maryland Clubwoman.

To be eligible, all entries must be postmarked by March 1, 2018.

Please mail to:

Reno Eitel, GFWC MD President

510 Anchor Drive, Joppa, MD 21085

Outstanding GFWC Maryland Clubwoman Award

Name of Nominee: _____

Address of Nominee: _____

Telephone Number: _____

Club Name: _____

Club President's Name: _____

Signature of Club President

Date

NOTE: This cover sheet must accompany a separate sheet of narrative of 500 words or less entry (typed, double spaced). The supporting page of narrative must NOT contain the nominee's name, club name, or dates to ensure anonymity in judging.

If you have any questions regarding this narrative, please contact the State Chairman:

Babs Condon

babscondon@comcast.net

410-303-6967

All entries must be postmarked by March 1, 2018 and mailed to:

Reno Eitel

GFWC Maryland State President

510 Anchor Drive

Joppa, MD 21085-4502

YOUTH ART PROGRAM CONTEST



ELIGIBILITY:

All students from the sixth grade through the twelfth grade are eligible. Entries must be submitted through a local MFWC Woman's Club and judged at a District level before going on to MFWC State judging. Work will be judged in two classes: Art: Class 1- Grades 6, 7 & 8 and Class 2-Grades 9, 10, 11 & 12; Photo/Computer Art: Class 1 and Class 2

RULES AND GUIDELINES:

All entries should be original, done by the student between 3/1/17 and 3/1/18.

Rearrangements of existing work to create new compositions are accepted but judged considering age appropriateness and creativity, especially with computer-enhanced photography and graphics.

Work may be of the following media: oil, lead pencil, pen and ink, charcoal, pastels, watercolors, acrylic, mixed media, photography/computer art. If necessary, the work should be sprayed with a fixative.

Entries must have firm backing of heavy cardboard or foam core. We must stress that entries must have a firm backing!! Maximum size not to exceed 24" x 36" in its entirety, including computer graphics. Canvas may be stretched or mounted. No frames or glass.

Each entry must have an Entry Card securely attached to the back with the information as given on the sample below. Each card must have the student's name, personal e-mail and home address, zip code, phone number, grade, school, and type of media. Entries without cards will not be judged. Entries with school information rather than personal information will not be judged! You MUST use the Entry Card below! No

substitutions will be allowed. Email addresses must be included since we contact winners by email. Please send a list of all winners in each category, including the contact information and the information also listed on the Program Entry Card below. Otherwise, the entry(ies) may be disqualified.

Each local club or district shall establish rules to determine how many entries each student may submit.

For the state program, three (3) winning works will be accepted from Class 1 in ART and three (3) from Class 2 in ART and three (3) from Class 1 or 2 in Photography/Computer Art in each district.

Local club/district contests, at their discretion, may set dates and present their winners with awards.

At state level, the GFWC MFWC, Inc. offers two (2) First Place, two (2) Second Place, and two (2) Third Place Awards in the High School Class 2 Division and one (1) First Place, one (1) Second Place, and one (1) Third Place Award in the Middle School Class 1 Division.

DEADLINE: All District winning entries must be received by March 26, 2018 for the state contest. Judging of artwork will then take place. The winning artists will receive their awards at the MFWC State Convention to be held April 21-22, 2018 at a place to be determined and where the original works will be displayed.

Contact Celeste Riddle at celeste@cablespeed.com or 410-859-0606 with any questions concerning the state contest.

MFWC YOUTH ART PROGRAM ENTRY CARD

PLEASE PRINT CLEARLY! All personal information MUST be included, Do not use school emails or addresses. You MUST use this card.

Name _____

Personal Email _____

Home Address _____

City _____ State _____ Zip Code _____

Home Phone _____ Cell # _____

School _____ Grade _____

Type of Media _____ Title _____

GFWC COMMUNITY INVOLVEMENT PROGRAM CONTEST

The GFWC Community Improvement Program Award offers GFWC clubs financial incentive to implement projects designed to meet community specific need. Club projects that help make your community a better place to live are “community improvement” projects and are eligible for national recognition and reward. GFWC awards a total of \$18, 860 to state and national winners. Almost any project can be turned into a Community Improvement Program Award entry. Every club has a winning project. Be sure to enter yours!

- Club projects must be accomplished during the period **January 1, 2016 - December 31, 2017**.
- Club entries are submitted via mail directly to your State Community Improvement Program Award Chairman, post-marked no later than **March 1, 2018**.
- Club entries must include the official, completed Community Improvement Contest **Entry Form/Cover Sheet 2016-2018**.

The fill-able entry form/cover sheet can be downloaded from the GFWC Club Manual at the conclusion of the Community Improvement Program Award section. Included project entry notebooks containing narrative description(s) and supporting materials must not exceed seven pounds in weight nor measure more than 15”x 20” in size.

- Club entries are to be judged at the state level by a panel of three, pre selected judges, **March 5 - 15, 2018**.

Judging criteria includes project selection, project development and project evaluation. A list of the state’s first, second, and third place winners is to be sent to GFWC on or before **March 20, 2018**. GFWC state entry award checks are issued to winning state clubs after the winners are announced at the 2018 State Convention. The state’s first place entry is submitted to GFWC by April 1, 2018. Judging for national awards takes place in April, 2018. National awards are presented in June at the GFWC Annual Convention in St. Louis, Missouri. One member from each of five winning clubs and the International Affiliate award winner will receive roundtrip airfare and one night’s lodging and ticket to attend the award ceremony.

Complete details on entering the 2016-2018 Community Improvement Program Award Contest can be found in the GFWC Club Manual.

Every club has a winning project. Be sure to enter yours!

Warmly,

Hope Royer

Hope Royer

2016-2018 GFWC Community Improvement Program Award Chairman



BYLAW AMENDMENTS

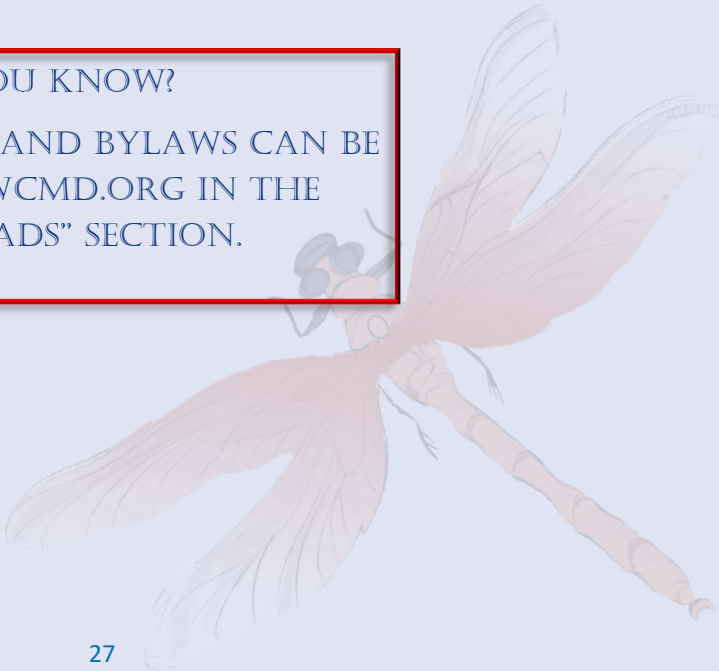
DEADLINE FOR SUBMITTING PROPOSED AMENDMENTS TO THE GFWC-MD BYLAWS

Proposed Amendments to the GFWC-MD Bylaws must be received by the Bylaws Committee Chairman on or before February 1, 2018 pursuant to the Bylaws of The GFWC Maryland Federation of Women's Clubs, Inc. Article XVII. Amendments may be proposed by the Bylaws Committee, the Executive Committee, or by a Club of the Federation.

If you need to reach me, have any questions or have any proposed amendments to bring to the attention of the MD Bylaws Committee, the contact information for me is below.

Cynthia Ann Dykes
GFWC MD Bylaws Chairman
1407 W. Sandy Acres Drive
Salisbury, MD 21804
H: 410-742-4658
C: 301-351-7752
cynad1@yahoo.com

Additionally, pursuant to our bylaws, Article XIV, Section 3, each club of the MD Federation is to provide the Bylaws Committee a copy of its bylaws and any amendments it may make to assure that they are not in conflict with the GFWC-MD Bylaws. Several clubs still need to do so and I have contacted the district presidents to help move this process along. Thank you in advance for your prompt compliance.



DID YOU KNOW?
THE GFWC MARYLAND BYLAWS CAN BE
FOUND AT GFWCMD.ORG IN THE
"DOWNLOADS" SECTION.

DISTRICT REPORTING

BALTIMORE DISTRICT

The Baltimore District will be in transition for the 2018-2020 administration with the consolidation of the Southern District, Baltimore District and the Eastern Shore District. This district will be named The Chesapeake District. The rationale for this consolidation stems from low membership. With the consolidation, it is hoped that by working side by side, the clubs will accomplish more and therefore attract new members. By-Laws are being worked on and compiled, and will be ready by the start of the 2018-2020 administration. We are also in the process of nominations for officers for the Chesapeake District.

GFWC Joppatowne Woman's Club, Inc. has bingos twice a year, a fall raffle, and a tea in the spring as their fundraisers. Their projects are Anna's House transitional home for women and children, tabs for Ronald McDonald House, animal shelters, scholarships, boxes for our service men and women, and boxes for boys and girls in impoverished countries. They serve breakfast to the local Sheriff's' Department twice a year.

GFWC Woman's Club of Dundalk, held a Soup for the Soul Day and raised over \$2,000.00. They will be having a bingo, and the club has an annual scholarship raffle.

GFWC Woman's Club of Greater Fallston, has taken shoe boxes filled with products for the veterans at Perry Point Veterans facility. The women have donated \$100.00 to the facility to purchase Christmas gifts for the veterans or to use where they believe it is needed.

The Woman's Club of Glyndon, participated in Boscov's Friends Helping Friends, and they collected \$900.00. The club recently held an event called Bids, Bits, and Kal, which consisted of a dinner, silent auction and speaker. The speaker was Kal Kallagher, International political cartoonist, Pulitzer Prize nominee and local resident.

Myrtle Club

As former presidents of the Baltimore District, the Myrtle Club supports other clubs in the district, and carry out projects for CIP program. In January, they will hold a workshop to make tray favors for the Meals On Wheels program. The club meets twice a year.

The Woman's Club of Perry Hall

Membership recruitment efforts this year included a booth at the Perry Hall fair, and spring and fall "Meet and Greet Events". Thus far this year we've had 6 new applicants for membership. Fundraisers in 2017 included a jewelry shopping event, a Paint Night session, a flea market sale, restaurant events, and a "Week of Dinners" raffle of donated restaurant gift cards. Funds are used to support a variety of local community organizations including giving a Scholarship to a female student from Perry Hall High School, providing a HOBY scholarship, donating to the Maryland School for the Blind, and helping a local middle school with bus transportation for a girls' "hiking trip". In the fall, we delivered baskets of treats to our local fire and police departments as well as our two local libraries. We also support international groups such as Smile Train, Heifer International and Little Dresses for Africa. We participate in the "Meals on Wheels" program, and, twice monthly, we serve dinner at the The Eastside Family Resource Center and Shelter.

Sincerely,

Dorothy Bishoff

Dorothy Bishoff

GFWC Maryland Baltimore District President

"I think a hero is any person really intent on making this a better place for all people."

- Maya Angelou

DISTRICT REPORTING



EASTERN SHORE DISTRICT

The Eastern Shore District (ESD) most recently hosted the GFWC Maryland Federation Board of Directors Meeting held in Hurlock, MD at Suicide Bridge Restaurant. For those who have never been there, the food is delicious, and it is in a beautiful setting beside Cabin Creek which empties into the Choptank River just a couple of miles away. It was an informative meeting with membership and reporting workshops conducted. The speaker, Shelia Murphy of the Cecil County Community Services Foundation, who some of you may remember from an ESD meeting a few years ago, was dynamic and very entertaining. She spoke about the impact and influence of the arts on our busy lives and how they help a person stay in balance; volunteering for others also helps us maintain balance.

After the first of the year, the GFWC Pocomoke Junior Woman's Club will be hosting the Maryland Federation Junior Mid-Winter Rally. We all look forward to the juniors coming down to the shore for this event. Our other clubs are busy doing what we usually do, working hard to make things better in our communities with a variety of activities.

The upcoming consolidation of our district is an issue of much talk and concern in the ESD. As a consequence, we have made no long term plans or begun no long term projects, other than planning meetings through the end of May 2018. As this issue goes to press, so to speak, the other two districts also a subject of consolidation with our district, Baltimore and Southern, will have already met to consider the consolidation. The ESD will be meeting in a couple of weeks at our Board of Directors meeting to consider the matter in earnest. I would imagine those districts feel much as we of the ESD feel, we are sad to let go of our very familiar, ambitious and effective "little district that can" to become something, new, bigger and hopefully something for the betterment of the Maryland Federation as a whole. Change is hard but good things can come out of effective change. Nevertheless, we of the ESD are proud of our history and record of accomplishment over the years and look forward to a bright new future, continuing "volunteering for change."

Respectfully,

Cynthia A Dykes

Cynthia Ann Dykes

Eastern Shore District President



DISTRICT REPORTING

SOUTHERN DISTRICT

There are three clubs in the Southern District: GFWC Woman's Club of Linthicum Heights, Inc. Severn Town Club and Southern Lights.

GFWC Woman's Club of Linthicum Heights

Seven new members were welcomed into the club this year. They attended a new member orientation and were inducted into the club at the Opening Tea in September.

Each year the fundraisers are: The Annual Prayer Breakfast which raised \$2,250.00, the Holly Mart which raised \$6,685.00, and the Holiday Gala "The Twelve Days of Christmas", which raised \$5,947.72. There was also a Bingo Party, Quarter Auction, 50/50 raffle and donations from club members and friends for use of the clubhouse for parties, receptions and meetings. These fundraisers help the club give scholarships to North County students and sponsor a sophomore at Hugh O'Brien Youth Leadership to attend a three day leadership seminar. A donation is made to NCEON, the North County emergency food distribution center to purchase turkeys along with a trunk full of nonperishable food items. There was an Operation Christmas Child shoebox project which is a part of the Samaritan's Purse Organization. This provided gifts of toys, school supplies, hygiene items. These boxes are sent to 100 different countries. There is a writing contest and a reception honoring Youth Art and Youth writing which is held in April.

Severn Town Club

The big fundraiser, The Holly Ball, had proceeds of \$47,000.00. The major recipient, Maryland Hall for the Creative Arts was presented with a check for \$35,000.00.

Other donations were made to Light House, Inc., Arundel Lodge, Assistance League, Annapolis Maritime Museum, YMCA (Arden House), Creating Communities, HOBY, and Hospice.

This club had the good fortune of recruiting new members and working very hard to gain new members. Severn Town Club will continue to carry on the tradition of supporting their community and club members.

Southern Lights

This club's membership comprises the past and present Presidents of the Southern District. It also has the distinction that 75% of its members both serve on the Southern District Executive Committee and GFWC Maryland Federation Board of Directors.

I am so very proud to be the President of the wonderful and philanthropic Southern District.

Sincerely,

Beverly Death

Beverly Death

Southern District President



STATE PRESIDENT'S SPECIAL PROJECT



President

Eitel chose SHIP (Student Homeless Initiative Partnership) of Frederick County as her special project for 2016-2018.

According to the McKinney-Vento Law, homeless children are those without a permanent home. It is these children that SHIP is dedicated to serving.

After meeting with Mary Lynne Hinde, Associate Director, a plan was developed to seek funds from various clubs in the state to support this worthy cause. After studying information online from the Maryland Department of Education as provided by the local school systems, this Chair decided to form a committee to assist her in calling attention to these sobering facts and to initiate SHIP's active support for homeless children in Frederick County. This chair was invited to attend Maryland club meetings to raise awareness of SHIP's mission and to, hopefully, receive honorariums for doing so.

2016-2017: I Presented the program at four Maryland Clubs and four State meetings. We have thus sent \$550.00 to SHIP of Frederick County. Presently, a check for \$537.16 is being sent to SHIP from our State Organization.

Seeing the same need to support homeless children in my own Carroll County, the GFWC Woman's Club of Westminster, Inc. partnered with Carroll County Public Schools (CCPS) under the direction of the Supervisor of Student Services. The ten Pupil Personal Workers (PPW's) submit a written request for assistance via our club email. The student's name is never shared. We are provided with the nature of the need and the information required to fill the request such as: clothing and shoe sizes, size of beds that need outfitting, money required for school supplies, etc. Gift cards or clothing are taken to Central Office. Often the PPW's take the children shopping. Since this initiative has begun we have assisted fifty-two children, raised over \$6,000 by donations and in-kind donations of \$1,500.

If you or your club would like to donate, please donate through their website (Shipfrederick.com), or mail a check to P.O. Box 1629 Frederick, MD 21702

Making the difference in the life of a child enables us to share our living of the volunteer spirit.

Warmly,

Norma Jean Swam

LEADERSHIP AND CALL TO ACTION



Leaders are vital for the continued success of our clubs. Always remember, leaders are not just born; they can be created with care, support and mentoring from current leaders. GFWC has one of the best “incubators” for rising and future leaders with the LEADS program. It provides knowledge and instills confidence in a person, both essential leadership qualities.

Each state in GFWC is eligible to send an attendee to this seminar which is held each year, usually the day before the GFWC International Convention begins. GFWC demonstrates its commitment to training future leaders by funding a portion of the candidates’ expenses. In addition, the Maryland Federation provides a stipend to help defray expenses. LEADS candidates are asked to be responsible for a portion of their expenses as an affirmation of their personal commitment to their leadership development and training.

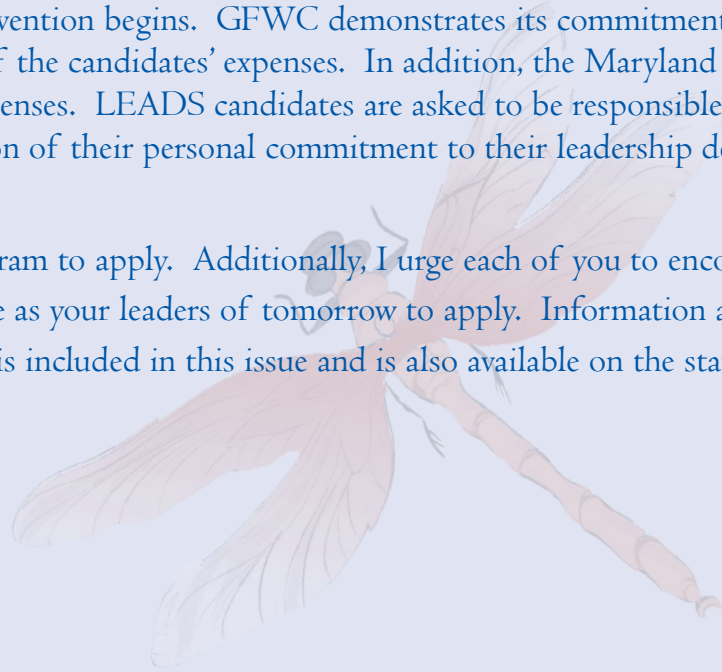
I encourage anyone interested in the program to apply. Additionally, I urge each of you to encourage those members of your clubs who you see as your leaders of tomorrow to apply. Information along with the application for the LEADS program is included in this issue and is also available on the state website. Please give it due consideration.

Warmest wishes,

Cynthia Dykes

Cynthia Dykes

GFWC Maryland Leadership Chairman



BRADENTON WOMEN’S CLUB CLUBHOUSE

Hurricane Irma left the Bradenton Women’s Club 96-year-old Clubhouse destroyed by major flooding, wind, and debris. So, we are asking the Maryland Clubwomen to do what they do best, rise to the call of action. The repairs of the building from 1921 are expected to be severe as they work to restore the roof and recover whatever they can from the flooded building. You can donate to the repair costs through their website, bradentonwomensclub.com, or through their social fundraiser, [gofundme.com/Bradenton-womans-club-roof](https://www.gofundme.com/Bradenton-womans-club-roof).





MEMBERSHIP

MEMBERSHIP — THE REAL DEAL

GFWC Membership is the lifeblood of our organization. We need bright ideas; heartfelt openness and GFWC knowledge to maintain the health of our GFWC. Below are a few membership recruitment things to think about and possibly implement at each club, district, state and region level. Use the items as a resource to add new strategies to your membership toolkit.

Approach - Your approach to recruiting new members will only be as effective as the priority that you give it and the GFWC knowledge that you share. Can you explain the keys benefits of joining GFWC? Carve out some time at your meetings to brainstorm opportunities and strategies for recruiting members. Keep the topic at the top of your mind and it will pay itself forward. Lead by example. Take some initiative and volunteer to personally be involved in recruitment activities and people will be more inclined to join you. If a personal touch is more impactful than a faceless email, common sense would tell us to focus on those efforts. Each activity during the fiscal year is an opportunity to recruit new members – are you taking advantage of it?

Events - How about using key club events during the year to recruit new members such as a tea or GFWC night. At the events give members a ribbon or print the name badges and for non-members use a different color paper so it is easy to differentiate. During the announcements, ask that the members help welcome non-members to the event.

Publicity - Why not take advantage of your local newspapers and television advertising your meeting dates, times, and speakers? If you don't ask – you'll never know if they will put something in.

Messaging - People expect personalized communication. Today's technology allows us to send emailed membership information addressed to a specific person, not a group or entity. Focus your communication on a particular aspect of membership that will provide value to a potential member — avoid sending a laundry list of benefits. You can include a link to a full list of membership benefits — but attention spans are short, so use your limited space to explain why a member should join by focusing on a specific benefit. Consider sending a note or personal invitation to prospective members welcoming them to join you to hear the speaker and learn more about GFWC. Always demonstrate the value of what belonging to GFWC means and then ask them to be a part of the GFWC Sisterhood.

Prospecting - Potential members can come from many sources. Consider them all, but prioritize your efforts on warm (rather than cold) leads:

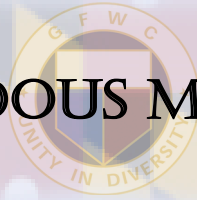
- Current Members: Consider a member recruitment campaign where members who refer new members to the organization are entered into a drawing. Make it easy by developing an email that can be forwarded to non-member contacts. Ask board members to identify industry leaders who should be members of your organization.
- Non-member event attendees: These people have already experienced your organization firsthand. Set aside 10 minutes each day to make a phone call and send a follow-up email personally inviting them to join. The personal touch will often make the difference.
- Former members: Send a brief exit survey and find out the reasons why they are no longer members. Identify themes and work to address the gap between your offerings and their expectation. Follow up with them and tell them what has been done to accommodate their needs.
- Non-members connected with LinkedIn, Facebook, Twitter, etc.: If you are being followed by non-members, obviously there is interest in your offerings. Use social media to ask them to consider joining. Demonstrate your ability to communicate with them through several channels.

Respectfully,

Henri Belcher-Stack

Henri Belcher-Stack, GFWC Membership Chairman

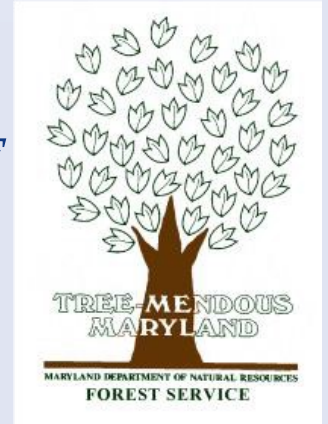
TREE-MENDOUS MARYLAND



GIVE AN ENVIRONMENTAL GIFT...

GIFT OF TREES FOR ONLY \$40.00 PER TREE

GFWC Maryland's Tree-Mendous Maryland Program has planted trees on public land since 1989. Thank you for making Maryland so green! Give the gift of life, celebration and memory that will continue to give for generations to come. Just follow these simple instructions...



1. Write a check for \$40.00 for each tree you want planted.

Mark MFWC on your check!

Make your check payable to: Maryland Department of Natural Resources.

2. Complete the "Give the Gift of Trees" form at bottom.

(A beautiful certificate will be mailed to the recipient in your name.)

3. Make a COPY of all information and mail to:

Julie Gibbs
Tree-Mendous MD Chairman
P.O. Box 419
Ocean City, MD 21843

4. Mail your check and form to: Tree-Mendous Maryland
Department of Natural Resources
Forest Service
Tawes State Office Building, E-1

TREE-MENDOUS MARYLAND

Give the Gift of Trees GFWC Maryland

Certificate in Memory of: _____

Certificate in Honor/Celebration of: _____

Send Certificate to: _____

Address: _____

City, State, Zip: _____

Gift From: _____

Enclosed is my check for \$ _____ for _____ trees. (\$40 per tree).

Planting Trees for a Cleaner Chesapeake Bay



IN MEMORIAM

RESOLUTION IN MEMORY OF **BARBARA EMMA LOWERY** THE FREDERICK WOMAN'S CIVIC CLUB, INC.



Whereas, we the members of the Frederick Woman's Civic Club, Incorporated, mourn the passing of our beloved member and friend, Barbara Lowery, and

Whereas, Mrs. Lowery was a cheerful, efficient and active member of this organization since 1991 and was always working to continue the ideals of our organization, and held the members of her club and the federation dear to her heart. Her greatest reward was knowing that her volunteer service made a difference in someone's life. She served as president from 2000-2002 and was instrumental in organizing the Youth Art competition which honors local young artists. She brought sunshine to members as chairman of the Sunshine committee for many years.

Whereas, Mrs. Lowery was married to her husband, William, and together they had two daughters. She was a school teacher of deaf children.

Whereas, Mrs. Lowery was a member of the Middletown United Methodist Church where she sang and was the choir director. She was past president of the Mid-Valley Homemakers Club and the Frederick County Homemakers Club. She was a 50-year member of the Order of Eastern Star.

Resolved, That the Frederick Woman's Civic Club, Inc., record its sorrow and expressions of sympathy at the passing of Barbara Lowery, and further

Resolved, That this resolution be inscribed in the minutes of this meeting and a copy sent to her family.

Rosemary Glenn, President

Frederick Woman's Civic Club, Inc.

BETTIE M. SIPPEL MEMORIAL ENDOWMENT FUND

If your club has ever wanted a way to contribute in honor or memory of a clubwoman, look no further. The Bettie M. Sippel Memorial Endowment Fund is the perfect way to honor them.

The fund is named for Bettie M. Sippel, the first woman from Maryland to be GFWC president. It is actually a combination of two funds, "The Endowment Fund" and "The Bettie M. Sippel Memorial Fund." The two funds were combined in 1957 to simplify record keeping, and so the Bettie M. Sippel Memorial Endowment Fund was born.

A contribution to the Bettie M. Sippel Memorial Endowment Fund is an investment in the next 100 years of the Maryland Federation. Please send all contributions to the GFWC-MD Treasurer. Make your check payable to MFWC Treasurer and write the fund name in the memo line.



THE MARYLAND CLUBWOMAN

CLUBWOMAN CONNECTION

February 3, 2018 GFWC-MD Mid-Winter Rally
XO Beanery and Bites, Pocomoke City, MD

February 20, 2018 GFWC-MD Board of Directors Meeting,
Holly Hills Country Club, Ijamsville, MD

April 21-22, 2018 GFWC-MD Annual Convention, Columbia, MD
Please note new date!

April 28, 2018 Joppatowne Woman's Club Annual Tea
Richlin Ballroom and Catering, Edgewood, MD

June 22-26, 2018 GFWC International Convention
St. Louis, MO